

# SAVONA ELLIPSE FOAM SOAP DISPENSER

*Ultra economical dose foam soap dispenser*



The SAVONA ELLIPSE FOAM soap dispenser provides a large volume of foam in a single dose making this an ultra economical choice for hand washing. Designed for all hand washing environments the dispenser has a large 800ml/2000 dose cartridge and incorporates a number of service friendly features.

As its name suggests this soap dispenser has been designed to dispense foam soap only.

The SAVONA ELLIPSE FOAM soap dispenser is available with a selection of customised inserts and in Kennedy's range of attractive finishes <sup>(1)</sup>



## Finishes available



Arctic White Designer Grey Chrome

## Customised insert designs available



White Turquoise Red Beige Metal Carbon Wood Water Drops

## Benefits

### Reliability & Durability

- > Straightforward design and use of highly durable material
- > Non-drip patented pump mechanism for foam soap
- > Angled top of dispenser to prevent cigarette burn damage
- > Locking system to deter theft and guarantee content integrity

### Ease of Service

- > Error proof soap refill loading
- > Hinged cover for operator convenience and speed of service
- > Practical inspection window shows when a refill is required
- > One security key for the whole Kennedy range

### End user Satisfaction

- > Luxurious and rich feeling foam soap lotion

<sup>(1)</sup> Customised inserts are available with the Arctic White finish. Designer and Chrome finishes come with a black insert.

For more information  
[www.kennedy-hygiene.co.uk](http://www.kennedy-hygiene.co.uk)



**Kennedy**

INTEGRATED HYGIENE SOLUTIONS

# SAVONA ELLIPSE FOAM SOAP DISPENSER

*Ultra economical dose foam soap dispenser*



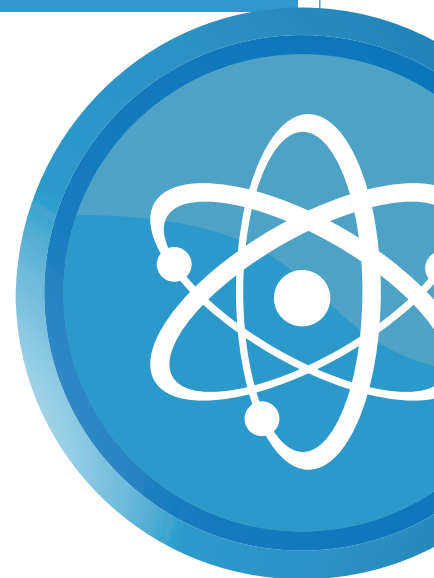
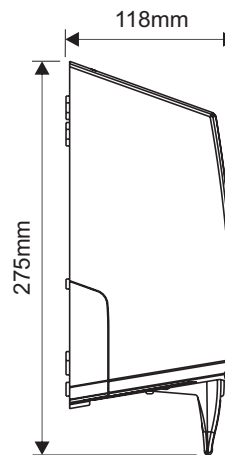
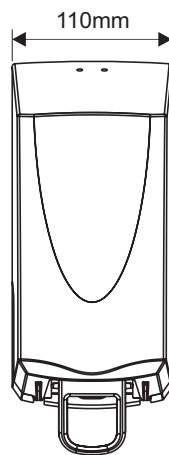
## Packaging info

|                     | <b>Packed</b> | <b>Qty Per</b> | <b>Weight/kg</b> | <b>Measurement in cm</b> |
|---------------------|---------------|----------------|------------------|--------------------------|
| SAVONA ELLIPSE FOAM | Carton        | 12             | 6.4              | 50 x 34 x 24             |

## Technical drawings

**Materials:** Constructed fully from recyclable thermoplastics.

**Packing:** Individual units are packed in a polythene bag. Twelve units are packed in a carton.



## Consumables

> Kennedy Foam Soap Hand Lotion

### **Kennedy Hygiene Products Limited**

Brookside  
Uckfield  
East Sussex TN22 1YA  
United Kingdom

**T** +44 (0) 1825 768141  
**F** +44 (0) 1825 768143  
**E** [sales@kennedy-hygiene.com](mailto:sales@kennedy-hygiene.com)

